

Woodlands Close Golders Green



Golders Green

Full double glazing

Semi detached

Sole agents

Off street parking

Potential to extend STPP

£1,275,000 FREEHOLD

A spacious four bedroom semi-detached house located on this popular residential road in Golders Green. The property benefits from a large frontage with off street parking for at least two cars, an eat-in kitchen and a garage and is offered for sale on a chain free basis. Viewings via sole agents Alan Goldin Estates.

Although every effort is made to ensure these details are accurate all dimensions are approximate measurements and not guaranteed. Purchasers are encouraged to satisfy themselves as to their accuracy. Alan Goldin Estates is unable to comment on the structure of the building or services and any investigations should be carried out by a qualified surveyor. We also strongly recommend that buyers ensure that all legal aspects are fully investigated by a solicitor prior to purchase. We have not carried out tests on any appliances or equipment and therefore cannot verify that these are in good working order. We understand from the vendor that the fixtures and fittings listed are to be included in the sale price but these may be subject to negotiation.

RECEPTION/DINING ROOM:

32'7 x 12'5 (9.93m x 3.79m)

Bay window, sliding door to second reception room.

RECEPTION 2:

14'11 x 11'2 (4.55m x 3.41m)

Door to garden and door to kitchen.

GUEST CLOACKROOM/WC:

Wash hand basin, low level W.C. obscured window.

KITCHEN:

21'6 x 11'0 (6.56m x 3.35m)

Range of wall and base units, two integrated I level ovens, two integrated gas hobs, stainless steel sink with mixer tap and drainer, space for fridge/freezer, space for table and chairs.

Stairs to 1st floor

BEDROOM 1:

17'4 x 8'11 (5.29m x 2.73m)

Extensive range of floor to ceiling fitted wardrobes to one wall.

BEDROOM 2:

14'10 x 9'0 (4.52m x 2.74m)

Extensive range of floor to ceiling fitted wardrobes to one wall, wash hand basin.

BEDROOM 3:

12'1 x 10'10 (3.68m x 3.29m)

Wash hand basin.

BEDROOM 4:

12'5 x 9'10 (3.79m x 3.0m)

Floor to ceiling fitted wardrobe, wash hand basin door to storage area.

STORAGE AREA:

16'1 x 8'3 (4.89m x 2.51m)

BATHROOM :

Three piece suite comprising of panelled bath with shower overhead, wash hand basin with storage below, fully tiled walls, obscured window.

SEPARATE W.C.:

Low level W.C., wash hand basin, window.

GARDEN:

Approximately 60 ft mainly laid to lawn.

PARKING:

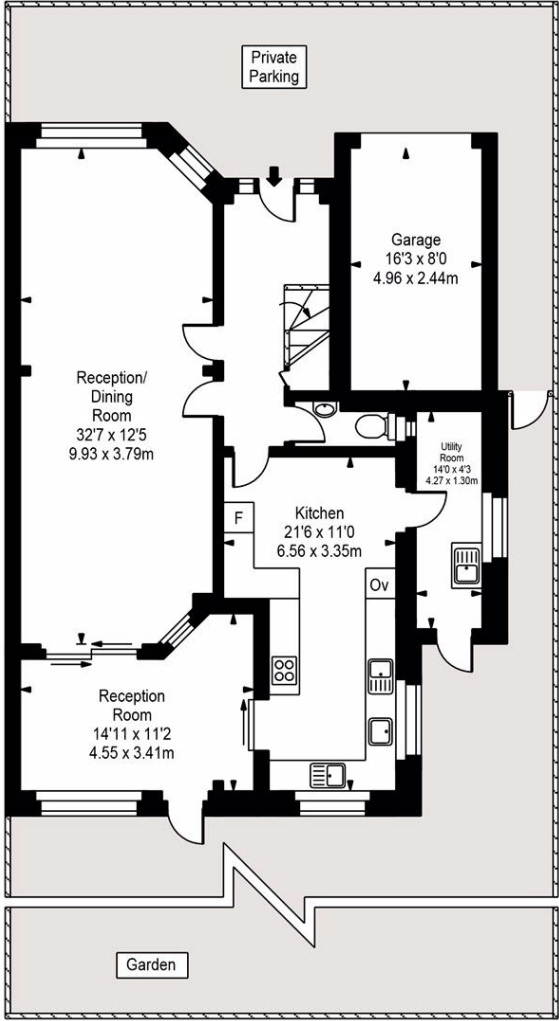
Off street parking for 2 or 3 cars.

TOTAL INTERNAL AREA:

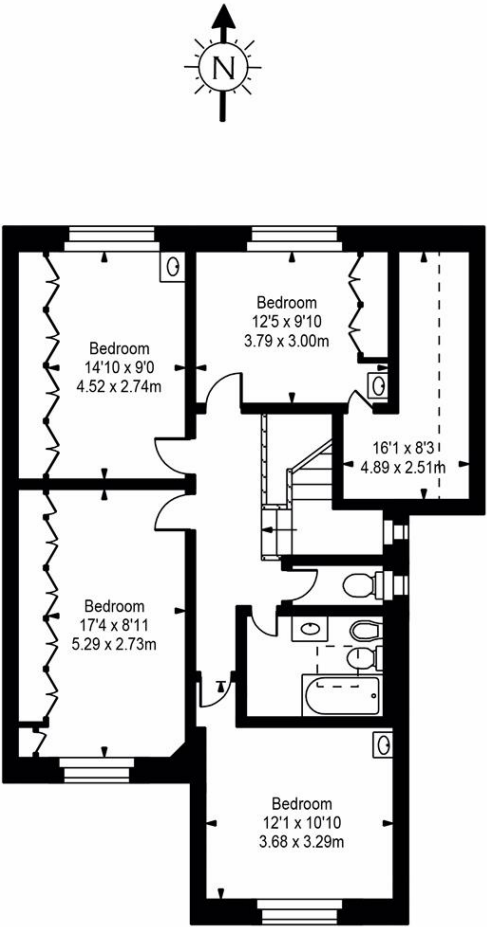
Approximately 2128 square feet (197.69 square metres)



Woodlands Close



Ground Floor



First Floor

Approx Gross Internal Area 2128 Sq Ft - 197.69 Sq M

For Illustration Purposes Only - Not To Scale
Floor plan by www.bestangle.co.uk